



SPRING 2023 NEWSLETTER

The Carbon Canyon Fire Safe Council's mission is: to preserve our canyon's natural and man-made resources on public and private property by development and enforcement of ecologically sound and appropriate fire safety measures.



Rains allow grasses to grow earlier, but ladder fuels against houses are the bigger threat!

(L) Melanie Schlotterbeck
(R) Claire Schlotterbeck

DOES HEAVY RAINFALL FUEL WILDFIRE?

It may seem contradictory that the recent drought-quenching rains seen across our area may lead to higher potential for wildfires. However, in areas that have experienced prolonged drought conditions or recent wildfires, rains often lead to an explosive growth of new vegetation. We are seeing it all through our rolling green hills. Much of this new vegetation growth is in the form of non-native grasses. Moist fuels are an ideal fire retardant, but these grasses are very susceptible to drying out after just a short period of low humidity and high temperatures. Once dried these "fine fuels" are easy to ignite.

In areas prone to wildfire, creating a separation in vegetation by removing ladder fuels is an important task. What is ladder fuel? It is any vegetation, decorations or even fencing that would allow a low-burning fire to vertically climb up from the ground and into a tree canopy or into your eaves.

Proper removal of ladder fuels usually entails appropriate pruning, reducing fine fuels, and keeping an eye on your tree health. We like to think of our beautiful oaks as fire resistant because of thick, furrowed bark and tough waxy leaves that are slow to burn. However, if we are not taking care of the ladder fuel underneath them, we are creating a hazard.

What can you do to protect your trees on or near your property?

- Remove all leaf litter.
- Cut seasonal grasses to no higher than 3".
- Remove any low hanging or dead branches.
- Keep an eye on your tree's overall health.

LOTS OF PRECIPITATION = LADDER FUEL = TREE CANOPY FIRES = TROUBLE!!!

THANKS SUPERVISOR HAGMAN!

Thank you to San Bernardino County Supervisor Curt Hagman and the City of Chino Hills for funding the removal of non-native vegetation along Carbon Creek from Chino Hills Parkway to Sleepy Hollow. The clearing of this vegetation, including the removal of palm trees in the creek, will help make the canyon more resilient to wildfire.



Claire Schlotterbeck



Fuel Reduction Program

**Brush drop off and
green waste dumpster
available to Carbon
Canyon residents**



**Saturday, April 29, 2023
8 am - 1 pm**

**Next to Fire Station 64 at
16231 Canon Ln. in Chino Hills**

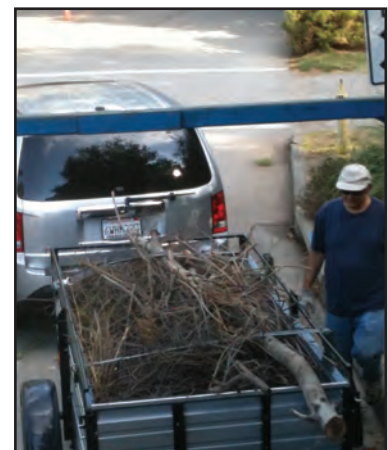
Contents must be bundled and
please be prepared to unload
your own brush

Volunteers will be available on-site
for those with special needs

**FREE TO
RESIDENTS ONLY**

Please bring ID, Utility Bill or Canyon Resident Pass

BE PREPARED! AVOID FINES!



Donations Accepted
Federal Tax ID # 91-2166978

Learn more at:
www.CarbonCanyonFSC.org
or call 909-315-8832



EVACUATION CHECKLIST

There will be fierce winds, high heat, and a severe fire threat this fall. Now is the time to get ready for that inevitability. Below is a useful list of suggested actions from experienced evacuees.

PRE-PLANNING

- Find or print your Carbon Canyon Evacuation Route Map. <https://bit.ly/Evac-Guide>
- Sign up for emergency notifications:
 - Orange County residents: www.AlertOC.com
 - San Bernardino County residents: www.SBCounty.gov/SBCFire/TENS/TENSContact.aspx
- Clear plant debris off your roof and remove branches overhanging your roof and eaves.
- Remove wood piles, boxes or high-growing vegetation next to your house and under your windows.
- Prepare equipment/carriers for pet evacuation.
- Document or film your household possessions.
- Go room to room NOW, making a list of what to take—we don't think clearly in a crisis and time crunch:
 - Important papers including insurance documents, deeds, and estate plans
 - Family heirlooms and jewelry
 - Cell phone, the charger, and/or address book
 - Photos and videos
 - Computer tower/laptop/back-up drives (monitors/keyboards are easily replaced)
 - Personal items to get you through the first few days (medication, eyeglasses)
 - Comfort items for children (blanket, pillow, stuffed animal, etc.)
 - Pet(s) - medications/leashes

PREPARING TO EVACUATE

- Secure house pets in a bathroom until you are ready to leave. (*Smoke and noises may cause them to hide.*)
- Park your cars in the driveway facing the street.
 - If you leave your car in the garage, be prepared to disengage and lift open the automatic garage door if the power fails. Be sure to close the garage door when you evacuate to keep embers out.
- Place valuables in the car for quick departure if necessary.
- Shut off the air conditioner and/or heater and close all windows and doors. (*This prevents embers from being sucked inside.*)
- Move propane tanks and combustible yard furniture away from the house or put it into a swimming pool.
- Turn on a light in each room, on the porch, and in the yard. (*This makes the house more visible in heavy smoke or darkness.*)
- Close all doors inside the house. (*This slows the spread of fire from room to room if your house does catch fire.*)
- Apply firefighting foam or put it out for the firefighters.
- Move furniture away from windows and open all curtains and drapes.
- Consider placing items in your pool that can withstand the water (like your silver and crystal). (*This saves space in your car for other important valuables.*)

EVACUATING

- Close your garage door, but leave it unlocked.
- Close all doors and unlock outside gates.
- Turn off sprinklers and running water.
(*This could affect water pressure of fire hydrants.*)
- Follow your pre-planned evacuation route and follow instructions of officials.



Carbon Canyon FSC Board of Directors

President

Charlie Blank

Vice President

Eric Johnson

Secretary-Treasurer

Paul Spitzzeri

Board Members

Dustin Haug

Ron Nadeau



Carbon Canyon FSC
P.O. Box 1328
Chino Hills, CA 91709-0045

Quick Tips

- Remove dead and flammable vegetation a minimum of 100 feet from all structures.
- Keep gutters clean and remove leaf litter from your roof and from the ground.
- Install fire safe vents or vent screens to prevent ember intrusion into the attic. Once embers are in your attic, your house is a goner.
- Be ready to go! When a wildfire strikes, leave early. Firefighters can't protect your home if they are instead spending time on resident evacuation.
- Don't wait until traffic is jammed and the fire either catches up to you in your car or jumps ahead of you.
- Some insurance companies offer discounts to homeowners who live in Fire Safe Communities. You do live in one. The certificate is on our website.

View the newsletter on the Fire Safe Council's website. (Use your phone's camera to scan this image.)



Tree Trimming & Timing

Our feathered friends are dependent on local trees and shrubs for nesting. Did you know that there is an appropriate time to trim trees? Please trim trees September to January, which is outside of nesting season. In the spring, birds are laying eggs, sitting on eggs (called brooding), or caring for their nestlings or fledglings between February and September. Be bird friendly!



Canva - passion4nature

Like Us on Facebook



The Council's effectiveness depends on community support. You can help us build that by liking our Facebook page. And, once you've liked it, invite your friends to like it too!

<https://www.Facebook.com/UniteCanyon/>

Quick Reference Guide

All Wildlife Rescue Line	562-434-0141
Brea's Carbon Canyon Road Hotline	714-990-7732
Brea Fire Department	714-990-7655
California Poison Control System	800-222-1222
Carbon Canyon Fire Safe Council	909-315-8832
Chino Hills' Road Condition Hotline	909-364-2828
Chino Valley Fire District	909-902-5280
City of Chino Hills	909-364-2600
City of Brea	714-990-7600
National Pesticide Info Center	800-858-7378