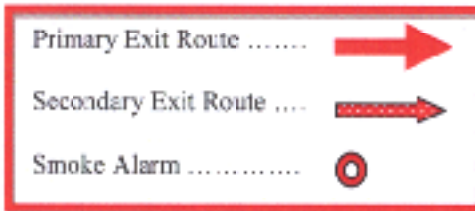


FIRE SAFETY FOR MANUFACTURED HOMES

DEVELOP AND PRACTICE A HOME ESCAPE PLAN. You should have a secondary exit from every room. Know your ways out. Make sure you can open and get out of windows and doors. Keep all exits (doors and windows) unobstructed.



DID YOU KNOW?

Even though fires occur less frequently in a manufactured home, the chance of injury or fatalities is greater.

Because the compartment size of a manufactured home is smaller, the timeline for getting out of the home safely, in the event of a fire, is shorter.

Over past 5 years	Fires	Injuries	Fatalities
All Single Family Dwelling	7023	376	102
Year round one family	6488	348	88
Manufactured Homes	194	16	9



Smoke Alarms

Have enough *working* smoke alarms in your home. Test these smoke alarms once a month. Replace batteries once a year. Replace the smoke alarm after ten (10) years.

Electrical

Use a licensed electrician for any electrical work. Use extension cords for temporary use only! Do not run electrical cords under carpets.

Cooking

Do not leave cooking unattended, stay in the kitchen when cooking anything. Supervise older children who are cooking. Keep any combustibles well away from the stove. Keep a portable extinguisher in the kitchen area. Place the extinguisher between the stove and the nearest exit.

Heating

Keep space heaters at least three (3) feet away from anything that can burn. If you use an extension cord to temporarily provide power for a portable heater make sure that it can handle the current the heater requires. Turn off portable heaters before leaving the house or going to bed. If you have electric baseboard heaters don't block the airflow and keep combustible products, such as curtains, blankets, etc., well away



Walls

Reduce the amount of materials on the walls which can reduce the protection offered by gypsum wallboard. Paneling or wall hangings promote the rapid spread of fire if they are not treated for fire resistance.

Smoking

If you have smokers in your home, ask them to smoke outside. Wherever people smoke, set out large, non-tip ashtrays on level surfaces and empty them frequently. Thoroughly douse butts with water before discarding. Check around and under cushions for smouldering butts.

Protect yourself from intruders

Install outdoor lighting to deter intruders, including would-be arsonists. Keep gasoline, charcoal lighter and other flammable liquids locked in an outdoor shed. Don't store items underneath your home. Store firewood away from your home and keep trash and other flammable debris cleaned up. Report any suspicious activity in your neighbourhood.

Choose a certified manufactured home

If you are in the market to purchase or rent a manufactured home, select a home built after 1973 that bears a label certifying compliance with the CSA-Z240 construction standard.